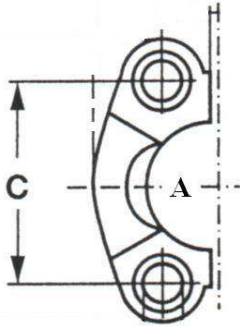
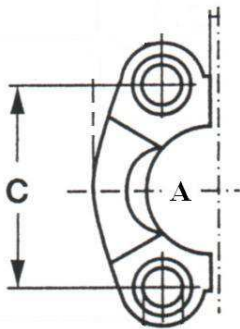


COPPIA SEMIFLANGIA SERIE 3000



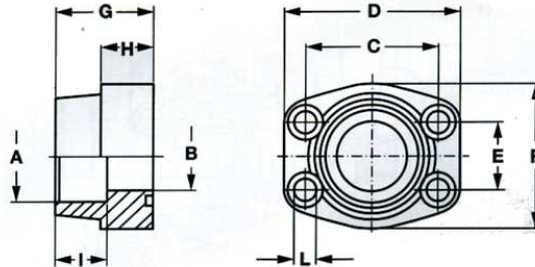
CODICE	A	C
AFS301	1/2	38,10
AFS302	3/4	47,63
AFS303	1"	52,37
AFS304	1"1/4	58,72
AFS305	1"1/2	69,85
AFS306	2"	77,77
AFS307	2"1/2	88,90

COPPIA SEMIFLANGIA SERIE 6000



CODICE	A	C
AFS601	1/2	40,49
AFS602	3/4	50,80
AFS603	1"	57,15
AFS604	1"1/4	66,68
AFS605	1"1/2	79,38
AFS606	2"	96,82

FLANGIA A SALDARE DI TASCA



Pressione max raccomandata della flangia Kg/cm ² Flange maximum recommended pressure Kg/cm ²	SAE	Tipo	Dimensioni										Viti		Or tipo	Peso Kg
			Dimensions										Screws			
	Nom. flange size in	Type	A	B	C	D	E	F	G	H	I	L	Metric	Unc	Or type	Weight Kg
			SERIE 3000													
345	1/2"	AFS080S	21,6	13	38,10	57	17,48	46	36	16	19	9	M 8x30	5/16x1"1/4	4075	0,25
345	1/2"	AFS080S038	17,5	13	38,10	57	17,48	46	36	16	19	9	M 8x30	5/16x1"1/4	4075	0,27
345	3/4"	AFS100S	27,2	19	47,63	65	22,23	50	36	18	19	11	M10x35	3/8x1"1/2	4100	0,37
345	1"	AFS102S	34,0	25	52,37	70	26,19	55	38	18	19	11	M10x35	3/8x1"1/2	4131	0,45
276	1"1/4	AFS104S	42,8	32	58,72	79	30,18	68	41	21	22	11,5	M10x40	7/16x1"3/4	4150	0,66
207	1"1/2	AFS106S	48,6	38	69,85	93	35,71	78	45	25	24	13,5	M12x45	1/2x1"3/4	4187	1,03
207	2"	AFS108S	61,0	51	77,77	102	42,88	90	45	25	26	13,5	M12x45	1/2x1"3/4	4225	1,17
172	2"1/2	AFS110S	76,6	63	88,90	114	50,80	105	50	25	30	13,5	M12x45	1/2x1"3/4	4275	1,53
138	3"	AFS112S	90,5	73	106,38	134	61,93	124	50	27	34	17,5	M16x50	5/8x2"	4337	2,09
34	3"1/2	AFS114S	103,0	89	120,65	152	69,85	136	48	27	34	17,5	M16x50	5/8x2"	4387	2,35
34	4"	AFS116S	115,5	99	130,18	162	77,77	146	48	27	34	17,5	M16x50	5/8x2"	4437	2,70
SERIE 6000																
414	1/2"	AFS401S012	21,6	13	40,49	57	18,24	46	36	16	19	9	M 8x30	5/16x1"1/4	4075	0,25
414	1/2"	AFS401S038	17,5	13	40,49	57	18,24	46	36	16	19	9	M 8x30	5/16x1"1/4	4075	0,27
414	3/4"	AFS402S	27,2	19	50,80	71	23,80	55	35	21	22	11	M10x40	3/8x1"1/2	4100	0,51
414	1"	AFS403S	34,0	25	57,15	81	27,76	65	42	25	22	13	M12x45	7/16x1"3/4	4131	0,80
414	1"1/4	AFS404S	42,8	32	66,68	95	31,75	78	45	27	25	15*	M14x45	1/2x1"3/4	4150	1,13
414	1"1/2	AFS405S	48,6	38	79,38	112	36,50	94	50	30	28	17	M16x50	5/8x2"	4187	1,86
414	2"	AFS406S	61,0	51	96,82	134	44,45	114	65	37	24	21	M20x70	3/4x2"1/2	4225	3,30
414	2"1/2	AFS507S*	76,6	63	123,80	180	58,70	152	80	45	32	26			4275	6,60

DESIGNAZIONE PER ORDINE
DESIGNATION FOR ORDER

Solo flangia
Only flange

Flangia completa di viti metriche, grower e o-ring
Flange complete of metric screws, growers type washer and o-ring

Flangia completa di viti unc, grower e o-ring
Flange complete of unc screws, growers type washer and o-ring

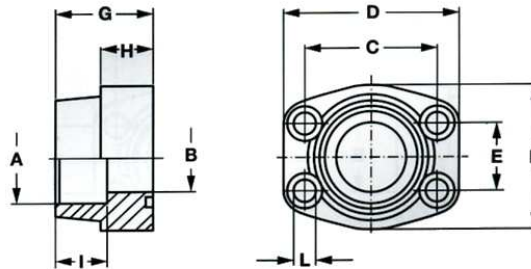
Materiale / Material	
ST52.3	AISI 316L
AFS...S	AFX...S
AFS...SM	AFX...SM
AFS...SU	AFX...SU (set viti unc disponibile solo in acciaio al carbonio) (unc screws set available only in carbon steel)

NOTE:
NOTES:

* Per viti unc L= 13,5
* Solo in ST52.3

* For unc screws L= 13,5
* Only in ST52.3

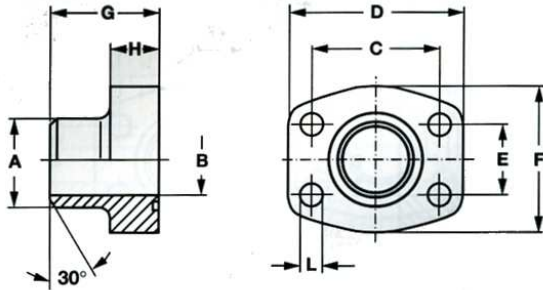
FLANGIA A SALDARE DI TASCA TUBO METRICO



Pressione max raccomandata della flangia Kg/cm ²	SAE	Tipo	Dimensioni										Viti		Or tipo	Peso Kg
			Dimensions										Screws			
Flange maximum recommended pressure Kg/cm ²	Nom. flange size in	Type	A	B	C	D	E	F	G	H	I	L	Metric	Unc	Or type	Weight Kg
SERIE 3000																
345	1/2"	AFS080SA20	20,3	13	38,10	57	17,48	46	36	16	19	9	M 8x30	5/16x1"1/4	4075	0,25
345	3/4"	AFS100SA25	25,3	19	47,63	65	22,23	50	36	18	19	11	M10x35	3/8x1"1/2	4100	0,39
345	1"	AFS102SA30	30,3	25	52,37	70	26,19	55	38	18	19	11	M10x35	3/8x1"1/2	4131	0,46
276	1"1/4	AFS104SA38	38,3	32	58,72	79	30,18	68	41	21	22	11,5	M10x40	7/16x1"3/4	4150	0,66
207	1"1/2	AFS106SA50	50,5	38	69,85	93	35,71	78	45	25	24	13,5	M12x45	1/2x1"3/4	4187	1,05
SERIE 6000																
414	1/2"	AFS401SA20	20,3	13	40,49	57	18,24	46	36	16	19	9	M 8x30	5/16x1"1/4	4075	0,25
414	3/4"	AFS402SA25	25,3	19	50,80	71	23,80	55	35	21	22	11	M10x40	3/8x1"1/2	4100	0,50
414	1"	AFS403SA30	30,3	25	57,15	81	27,76	65	42	25	22	13	M12x45	7/16x1"3/4	4131	0,76
414	1"1/4	AFS404SA38	38,3	32	66,68	95	31,75	78	45	27	25	15*	M14x45	1/2x1"3/4	4150	1,20
414	1"1/2	AFS405SA50	50,5	38	79,38	112	36,50	94	50	30	28	17,5	M16x50	5/8x2"	4187	1,90

DESIGNAZIONE PER ORDINE DESIGNATION FOR ORDER	Materiale / Material		NOTE: NOTES:
	ST52.3	AISI 316L	
Solo flangia Only flange	AFS...SA	AFX...SA...	* Per viti unc L= 13,5 * For unc screws L= 13,5
Flangia completa di viti metriche, grower e o-ring Flange complete of metric screws, growers type washer and o-ring	AFS...SAM...	AFX...SAM...	
Flangia completa di viti unc, grower e o-ring Flange complete of unc screws, growers type washer and o-ring	AFS...SAU...	AFX...SAU... (set viti unc disponibile solo in acciaio al carbonio) (unc screws set available only in carbon steel)	

FLANGIA A SALDARE DI TESTA



Pressione max raccomandata della flangia Kg/cm ²	SAE	Tipo	Dimensioni									Viti		Or tipo	Peso Kg
Flange maximum recommended pressure Kg/cm ²	Nom. flange size in	Type	Dimensions									Screws		Or type	Weight Kg
			A	B	C	D	E	F	G	H	L	Metric	Unc		
SERIE 3000															
345	1/2"	AFS080ST	21,5	13	38,10	57	17,48	46	36	16	9	M 8x30	5/16x1"1/4	4075	0,24
345	1/2"	AFS080ST038	17,5	13	38,10	57	17,48	46	36	16	9	M 8x30	5/16x1"1/4	4075	0,22
345	3/4"	AFS100ST	28,0	19	47,63	65	22,23	50	36	18	11	M10x35	3/8x1"1/2	4100	0,35
345	1"	AFS102ST	34,0	25	52,37	70	26,19	55	38	18	11	M10x35	3/8x1"1/2	4131	0,41
276	1"1/4	AFS104ST	42,8	32	58,72	79	30,18	68	41	21	11,5	M10x40	7/16x1"3/4	4150	0,64
207	1"1/2	AFS106ST	48,6	38	69,85	93	35,71	78	44	25	13,5	M12x45	1/2x1"3/4	4187	0,98
207	2"	AFS108ST	61,0	51	77,77	102	42,88	90	45	25	13,5	M12x45	1/2x1"3/4	4225	1,14
172	2"1/2	AFS110ST	77,0	63	88,90	114	50,80	105	50	25	13,5	M12x45	1/2x1"3/4	4275	1,55
138	3"	AFS112ST	92,0	73	106,38	134	61,93	124	50	27	17,5	M16x50	5/8x2"	4337	2,33
34	3"1/2	AFS114ST	103,0	89	120,65	152	69,85	136	48	27	17,5	M16x50	5/8x2"	4387	2,40
34	4"	AFS116ST	115,5	99	130,18	162	77,77	146	48	27	17,5	M16x50	5/8x2"	4437	2,85
34	5"	AFS118ST*	140,2	120	152,40	184	92,08	180	50	28	17,5	-	-	-	5,20
SERIE 6000															
414	1/2"	AFS401ST012	21,5	13	40,49	57	18,24	46	36	16	9	M 8x30	5/16x1"1/4	4075	0,24
414	1/2"	AFS401ST038	17,5	13	40,49	57	18,24	46	36	16	9	M 8x30	5/16x1"1/4	4075	0,22
414	3/4"	AFS402ST	28,0	19	50,80	71	23,80	55	35	21	11	M10x40	3/8x1"1/2	4100	0,48
414	1"	AFS403ST	34,0	25	57,15	79	27,76	68	41	21	13	M12x45	7/16x1"3/4	4131	0,64
375	1"1/4	AFS404ST	42,8	32	66,68	93	31,75	78	44	25	15*	M14x45	1/2x1"3/4	4150	1,00
320	1"1/2	AFS405ST	48,6	38	79,38	112	36,50	94	55	30	17	M16x50	5/8x2"	4187	1,68
250	2"	AFS406ST	61,0	51	96,82	134	44,45	114	65	37	21	M20x70	3/4x2"1/2	4225	2,86
230	2"1/2	AFS507ST*	76,6	63	123,80	180	58,70	152	80	45	26	-	-	4275	6,40

DESIGNAZIONE PER ORDINE
DESIGNATION FOR ORDER

Solo flangia
Only flange

Flangia completa di viti metriche, grower e o-ring
Flange complete of metric screws, growers type washer and o-ring

Flangia completa di viti unc, grower e o-ring
Flange complete of unc screws, growers type washer and o-ring

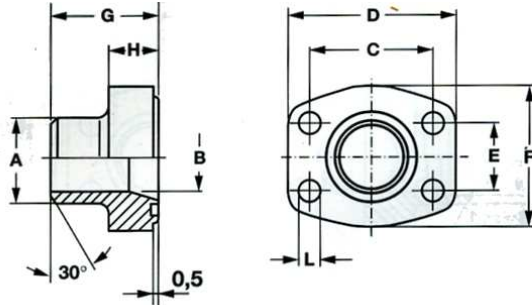
	Materiale / Material	
	ST52.3	AISI 316L
Solo flangia Only flange	AFS...ST	AFX...ST
Flangia completa di viti metriche, grower e o-ring Flange complete of metric screws, growers type washer and o-ring	AFS...STM	AFX...STM
Flangia completa di viti unc, grower e o-ring Flange complete of unc screws, growers type washer and o-ring	AFS...STU	AFX...STU (set viti unc disponibile solo in acciaio al carbonio) (unc screws set available only in carbon steel)

NOTE:
NOTES:

* Per viti unc L= 13,5
• Solo in ST52.3

* For unc screws L= 13,5
• Only in ST52.3

FLANGIA A SALDARE DI TESTA TUBO METRICO



Pressione max raccomandata della flangia Kg/cm ²	SAE	Tipo	Dimensioni								Viti		Or tipo	Peso Kg	
			A	B	C	D	E	F	G	H	L	Metric			Unc
Flange maximum recommended pressure Kg/cm ²	Nom. flange size In	Type	Dimensioni								Screws		Or type	Weight Kg	
		SERIE 3000													
345	3/4"	AFS100SRE25	25	19	47,63	65	22,23	50	36	18	11	M10x35	3/8x1"1/2	4100	0,35
345	1"	AFS102SRE30	30	22	52,37	70	26,19	55	38	18	11	M10x35	3/8x1"1/2	4131	0,41
276	1"1/4	AFS104SRE38	38	30	58,72	79	30,18	68	41	21	11,5	M10x40	7/16x1"3/4	4150	0,64
207	1"1/2	AFS106SRE42	42	36	69,85	93	35,71	78	44,5	24,5	13,5	M12x45	1/2x1"3/4	4187	0,98
207	1"1/2	AFS106SRE48	49	38	69,85	93	35,71	78	44,5	24,5	13,5	M12x45	1/2x1"3/4	4187	0,98
207	2"	AFS108SRE48	49	42	77,77	102	42,88	90	45	25	13,5	M12x45	1/2x1"3/4	4225	1,14
207	2"	AFS108SRE60	61	49	77,77	102	42,88	90	45	25	13,5	M12x45	1/2x1"3/4	4225	1,14
172	2"1/2	AFS110SRE76	77	62	88,90	114	50,80	105	50	25	13,5	M12x45	1/2x1"3/4	4275	1,55
138	3"	AFS112SRE76	77	70	106,38	134	61,93	124	51	26	17,5	M16x50	5/8x2"	4337	2,33
138	3"	AFS112SRE76	77	62	106,38	134	61,93	124	51	26	17,5	M16x50	5/8x2"	4337	2,33
34	3"1/2	AFS114SRE76	77	70	120,65	152	69,85	136	48	26	17,5	M16x50	5/8x2"	4387	2,40
34	3"1/2	AFS114SRE88	90	82	120,65	152	69,85	136	48	26	17,5	M16x50	5/8x2"	4387	2,40
34	4"	AFS116SRE76	77	70	130,18	162	77,77	146	48	26	17,5	M16x50	5/8x2"	4437	2,85
34	4"	AFS116SRE88	90	82	130,18	162	77,77	146	48	26	17,5	M16x50	5/8x2"	4437	2,85
		SERIE 6000													
414	1/2"	AFS401SRE20	20	14	40,49	57	18,24	46	34	16	9	M 8x30	5/16x1"1/4	4075	0,24
414	3/4"	AFS402SRE20	20	14	50,80	71	23,80	55	35	21	11	M10x40	3/8x1"1/2	4100	0,48
414	3/4"	AFS402SRE25	25	17	50,80	71	23,80	55	35	21	11	M10x40	3/8x1"1/2	4100	0,48
414	1"	AFS403SRE25	25	19	57,15	81	27,76	65	42	25	13	M12x45	7/16x1"3/4	4131	0,64
414	1"	AFS403SRE30	30	22	57,15	81	27,76	65	42	25	13	M12x45	7/16x1"3/4	4131	0,64
414	1"1/4	AFS404SRE38	38	28	66,68	95	31,75	78	44	25	15*	M14x45	1/2x1"3/4	4150	1,00
414	1"1/2	AFS405SRE38	38	28	79,38	112	36,50	94	56	28	17	M16x50	5/8x2"	4187	1,69
414	2"	AFS406SRE60	61	40	96,82	134	44,45	114	65	33	21	M20x70	3/4x2"1/2	4225	2,86
414	2"1/2	AFS507SRE76*	76,6	50	123,80	180	58,70	152	80	45	26	-	-	4275	6,40

DESIGNAZIONE PER ORDINE
DESIGNATION FOR ORDER

Solo flangia
Only flange

Flangia completa di viti metriche, grower e o-ring
Flange complete of metric screws, growers type washer and o-ring

Flangia completa di viti unc, grower e o-ring
Flange complete of unc screws, growers type washer and o-ring

Materiale / Material	
ST52.3	AISI 316L
AFS...SRE... (STRE...)	AFX...SRE... (STRE...)
AFS...SREM... (STREM...)	AFX...SREM... (STREM...)
AFS...SREU... (STREU...)	AFX...SREU... (STREU...) (set viti unc disponibile solo in acciaio al carbonio) (unc screws set available only in carbon steel)

NOTE:
NOTES:

- * Per viti unc L= 13,5
- * Solo in ST52.3

- * For unc screws L= 13,5
- * Only in ST52.3